

Music for Prague 1968

Tuba Excerpts for Band Auditions 2024

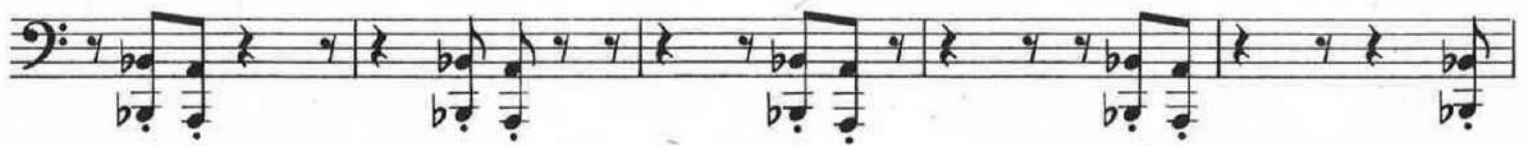
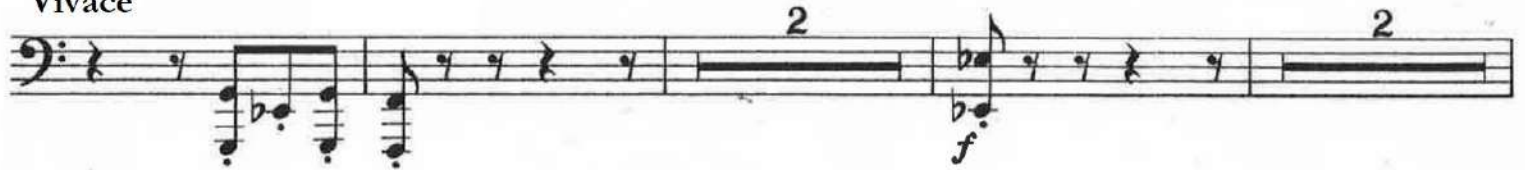
Excerpt 1

Adagio



Excerpt 2

Vivace



ALLEGRETTO [$\text{♩} = 104$]

2

mp

10

rall. a tempo

20

30

f mf

40

f

50

mf p

Since the rhythmic character of a piece depends mainly upon the rendition of the shortest notes, the $\text{♩} \text{♩}$ figures in the above study must be played with vigor and precision. It is a very common fault that the sixteenth note does not project equally with the dotted eighth.

Allegro non tanto

11. *p*
sempre staccato

L'istesso tempo

molto cresc.
f *pp* **Tempo I** *f* *p*

1 2