

# Natural Lip Slurs for Band

\*\*Brass: use one set of fingerings for an entire key signature.

## E Major

1-2-3

The first two staves of the E Major section show a sequence of notes with slurs. The first staff begins with a slur over the notes E4, F#4, and G4, with the fingering '1-2-3' written below. The second staff continues with a slur over the notes A4, B4, C5, and D5.

## F Major

1-3

The first two staves of the F Major section show a sequence of notes with slurs. The first staff begins with a slur over the notes F4, G4, and A4, with the fingering '1-3' written below. The second staff continues with a slur over the notes B4, C5, D5, and E5.

## F# Major

2-3

The first two staves of the F# Major section show a sequence of notes with slurs. The first staff begins with a slur over the notes F#4, G4, and A4, with the fingering '2-3' written below. The second staff continues with a slur over the notes B4, C5, D5, and E5.

## G Major

1-2

The first two staves of the G Major section show a sequence of notes with slurs. The first staff begins with a slur over the notes G4, A4, and B4, with the fingering '1-2' written below. The second staff continues with a slur over the notes C5, D5, E5, and F#5.

## A $\flat$ Major

1

The first two staves of the A $\flat$  Major section show a sequence of notes with slurs. The first staff begins with a slur over the notes A $\flat$ 4, B $\flat$ 4, and C5, with the fingering '1' written below. The second staff continues with a slur over the notes D5, E5, F5, and G5.

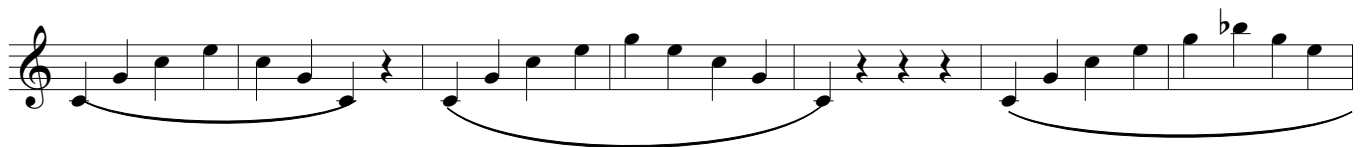
# Natural Lip Slurs for Band



A Major



Bb Major



Trumpet